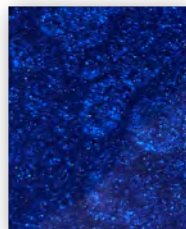


Metallic Pigments



Malachite



Kyanite



Tanzanite



Star Sapphire



Tiger Eye



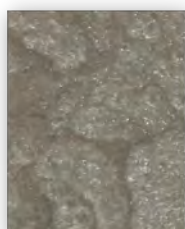
Sunstone



Hessonite



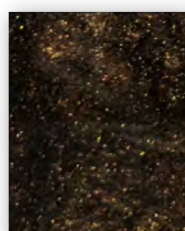
Brown Zircon



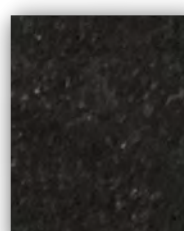
Danburite



Smoky Quartz



Boulder Opal



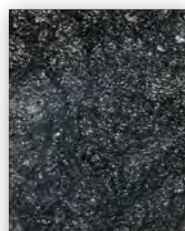
Obsidian



Galena



Moonstone



Magnetite



Black Onyx

Colors shown are approximate. Resin and hardener selection, substrate, mix ratio, application technique, ambient temperature, and relative humidity may affect color. Field tests are required in order to validate performance and appearance before use.

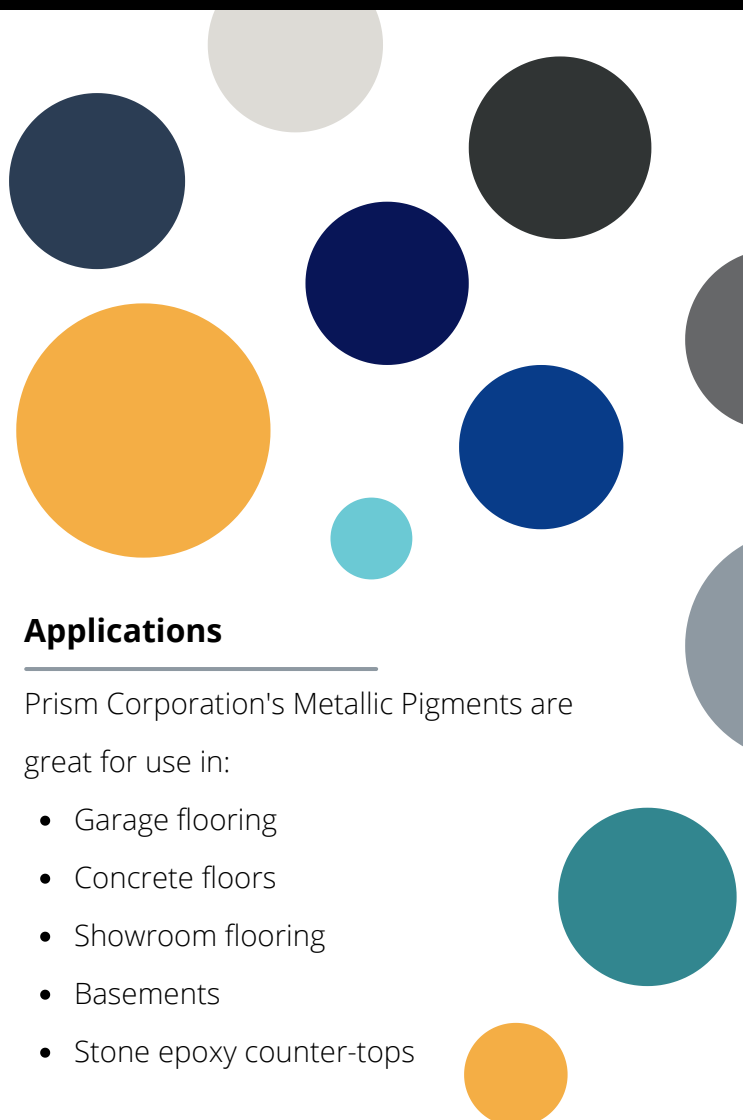
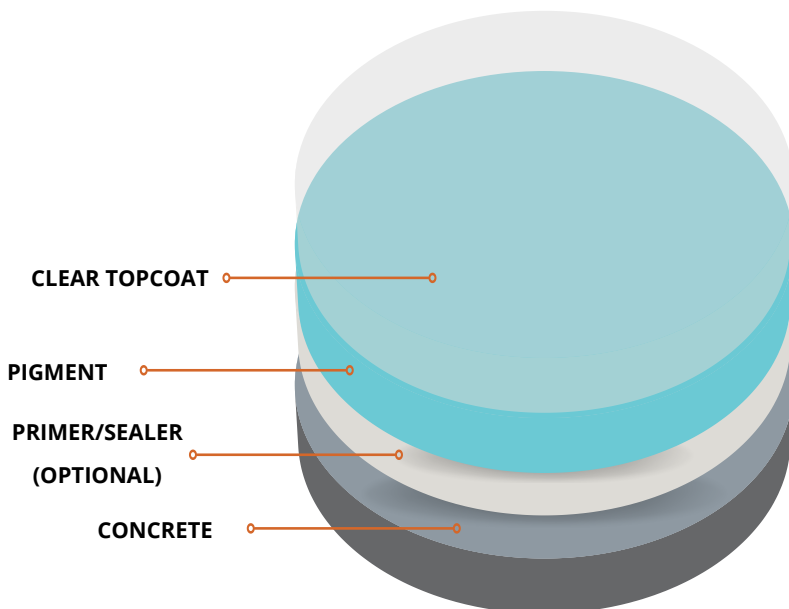
Metallic Pigments



Prism Corporation's Metallic Pigments are special effect pigments composed of mica nano-particles with various organic and inorganic pigments to create beautiful pearlescent and iridescent effects.

When mixed with clear epoxy, the mica-based pigments imitate the natural look of stone and rock formations. The metallic pigments give the coating a reflective shine and creates an eye-catching dramatic color.

Metallic Pigment System



Applications

Prism Corporation's Metallic Pigments are great for use in:

- Garage flooring
- Concrete floors
- Showroom flooring
- Basements
- Stone epoxy counter-tops

Coverage Rate Guidelines

Metallic Pigment	Mixed Coating Material	Coverage Area (Square Feet)
2 oz. unit	70 fl oz. unit	100 - 125 sq. ft
4 oz. unit	140 fl oz. unit	200 - 250 sq. ft
8 oz. unit	210 fl oz. unit	300 - 350 sq. ft
10 oz. unit	280 fl oz. unit	400 - 450 sq. ft

Disclaimer: The information set forth on this color card represents typical properties of the product described; the information and the typical values are not specifications. Prism Corporation makes no representation or warranty concerning the products, expressed or implied, by this sheet.